



MOUNTING REFERENCE GUIDE

Notebook

CIM Cable Integrated Mounting System



Content

General notes	3
How to create part numbers	4
Product highlights	6
Support arm pivot	7
Extended pivot arm light duty	9
Height adjustable arm	11
Extended height adjustable arm	13
Cart light duty	15
Cart light duty RC	17
Cart light duty kit I	19
Fixings	21
Fixings for anaesthesia machines	22

General notes

Components' grounding

All arms with integrated cable management are equipped with **component grounding**. No grounding is required for arms with external or semi-integrated cable management with cables not being led through joints.

Load capacity

All **height adjustable arms** have a load capacity of 22 kg / 48.5 lbs. Rear mounted monitor adaptations and horizontally mounted 5" plunge plates accept a maximum monitor weight of 18 kg / 39.7 lbs. An additional 4 kg / 8.8 lbs may be mounted on a down post underneath the front swivel part. Depending on material and tensile factor all weight indications have a 4-fold and/ or 6-fold safety factor according to IEC 60601-1 standards.

Custom-designed solutions and MRI applications

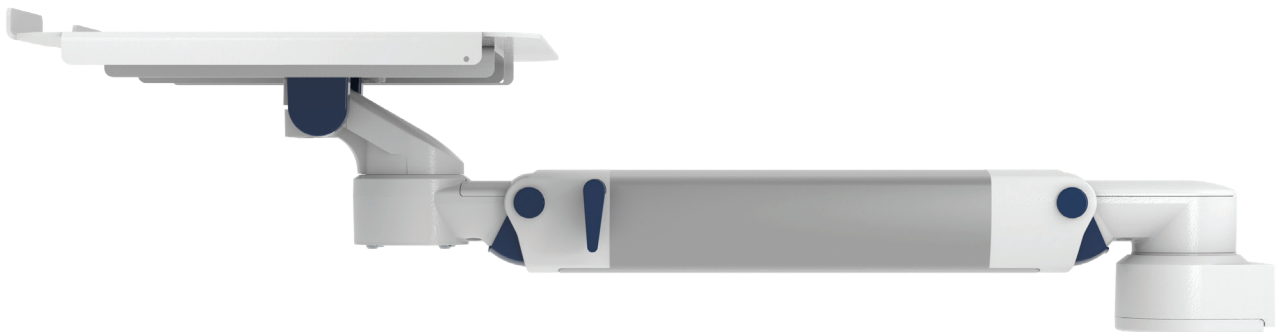
Please contact us for **custom-designed** solutions.

Product marking

All CIM products are CE marked. As **medical product risk class 1** they are conform with the regulations (EU) 2017/745 (MDR) and IEC 60601-1. Other standards of the IEC 60601 series are not applicable to our products, regardless of their version.

Warranty

All CIM arms have a 5-year warranty to be free of defects in material and functionality from the date of delivery.



How to create part numbers

Part numbers can be easily created by following the steps below:

Please replace the letters in **green** with the part no. code as per your requirements.

1. Components' grounding:

A = grounded

2. Choose the arm version required:

224TN / 230TN = support arm pivot
 33030TN = extended pivot arm light duty
 431TN = height adjustable arm
 73130TN = extended height adjustable arm

3. Specify where you want to mount the arm and select the fixing (Y):

1V = pole ø 23 - 40 mm / 0.9 - 1.6"
 1 = pole ø 25 mm / 1.0"
 1B = pole ø 30 mm / 1.2"
 1F = pole ø 35 mm / 1.4"
 1C = pole ø 38 mm / 1.5"
 2F = horizontal rails 10 x 25, 8 x 35, 10 x 30, 10 x 50 mm
 3 = vertical rail 10 x 25 mm
 4S = vertical wall channel
 13 = Mindray medical supply units
 17 = Amico pendants & headwalls
 9 = Löwenstein Medical anaesthesia machine

4. Choose the colour requested for decorative parts (C):

gr = RAL 7024 (graphite grey)
 bl = RAL 5013 (cobalt blue)

How to create part numbers

5. Choose the colour requested for the aluminium die-cast parts (D):

- | | | |
|---|---|--------------------------|
| 1 | = | RAL 9016 (traffic white) |
| 2 | = | RAL 9002 (grey white) |

6. Specify the spring depending on the weight of your monitor/ device - only with height adjustable arms (X):

- | | | |
|----|---|--------------------------|
| 60 | = | 1 - 4 kg / 2.2 - 8.8 lbs |
|----|---|--------------------------|
-

Example

01 Grounding		02 Arm version		03 Fixing		04 & 05 Colour		06 Spring tension
A	-	431TN	-	Y	.	CD	—	60
A	-	431TN	-	4S	.	gr1	—	60

Product highlights

Non-height adjustable arm

Pivot and extended pivot arms offer **full cable integration** and easy cleaning for **infection control** in all critical care areas in the clinical environment. Our **5-years warranty** guarantees reliable, trouble-free and maintenance-free operation. The swivel function at the fixing point as well as the **tilt/ swivel function** of the monitor adaptation offers optimum positioning of your device. The extended pivot arm is a two-part arm with central pivot point between the two arm sections. All bottom-mounted monitors have the safety feature of a **20° tilt stop**.

Height adjustable arm

The height adjustable arm offers **full cable integration**, one-wipe clean surfaces and our **5-year warranty** on the entirety of the product. Vertically and horizontally adjustable, the arm offers optimal positioning of your device. A constant viewing angle when vertically adjusted is guaranteed by a parallel linkage. **Weight-optimized springs counter-balance** the monitor without making any adjustments. All bottom-mounted monitors have the safety feature of a **20° tilt stop**. Individual rotational stops may be integrated in any joint.

To provide the perfect combination of arm and monitor, the CIM articulated height adjustable arm has a simple quarter-turn lock to hold the arm safely in position when removing the monitor. Furthermore the arm is equipped with the unique safety feature of a slow-release gas spring. Should anybody try to remove the monitor before locking the arm in position, the arm will only rise at a slow and even tempo.

SAFETY

Support arm pivot



Notebook tray

360 x 280 mm / 14.2 x 11"

Colours to choose

decorative parts RAL 5013 cobalt blue / RAL 7024 graphite grey
aluminum parts RAL 9016 traffic white / RAL 9002 grey white

Max. load capacity support arm

17 kg / 37.5 lbs

Max. load notebook tray

10 kg / 22 lbs

Product weight

arm type 240	arm type 300
2.5 kg / 9.5": 5.5 lbs	2.6 kg / 11.8": 5.7 lbs

Part number

arm type 240	arm type 300
A-224TN-Y.CD	A-230TN-Y.CD

Fixings

Y | details page 21 and 22



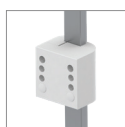
4S

Adapter for
vertical wall channel



2F

Horizontal rail clamp



3

Vertical rail clamp



1V

Universal pole clamp



1
1B
1F
1C

Fixed pole clamp



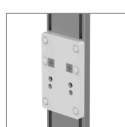
13

Adapter for Mindray
medical supply units



17

Adapter for Amico
pendants & headwalls



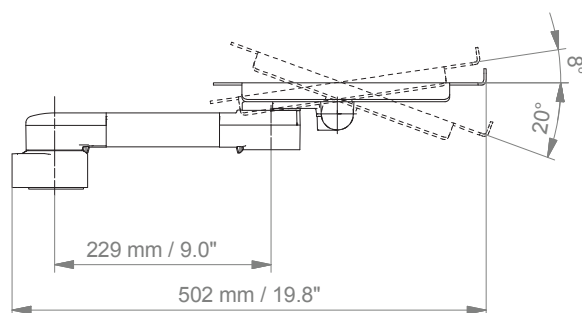
9

Adapter for Löwenstein Medical
anaesthesia machines

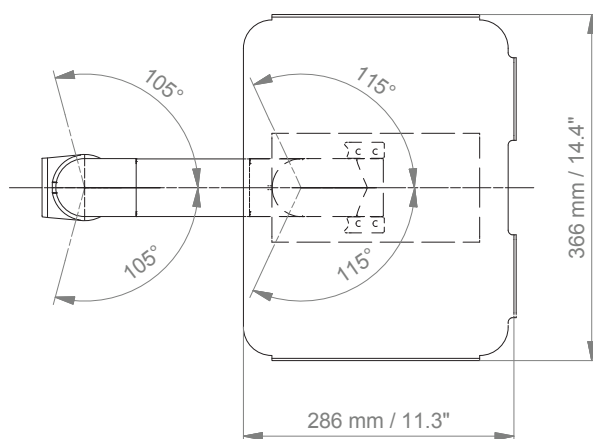
Support arm pivot

Technical data - arm type 300

SIDE VIEW



TOP VIEW



Extended pivot arm light duty



Notebook tray

360 x 280 mm / 14.2 x 11"

Colours to choose

decorative parts RAL 5013 cobalt blue / RAL 7024 graphite grey
aluminum parts RAL 9016 traffic white / RAL 9002 grey white

Max. load capacity support arm

7 kg / 15.4 lbs

Max. load notebook tray

7 kg / 15.4 lbs

Product weight

3.6 kg / 7.9 lbs

Part number

A-33030TN-Y.CD

Fixings

Y | details page 21 and 22



4S

Adapter for
vertical wall channel



2F

Horizontal rail clamp



3

Vertical rail clamp



1V

Universal pole clamp



1
1B
1F
1C

Fixed pole clamp



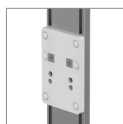
13

Adapter for Mindray
medical supply units



17

Adapter for Amico
pendants & headwalls



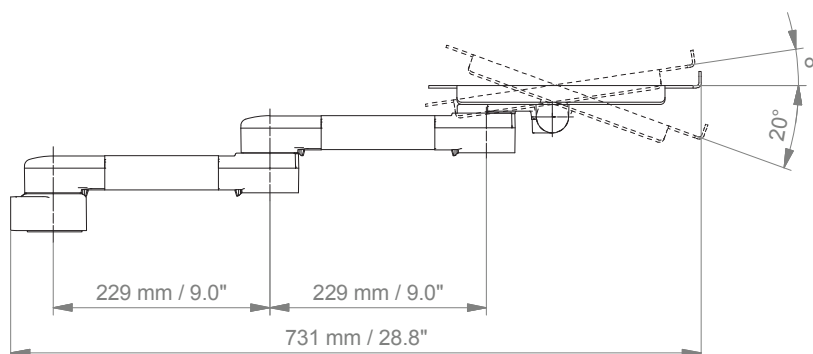
9

Adapter for Löwenstein Medical
anaesthesia machines

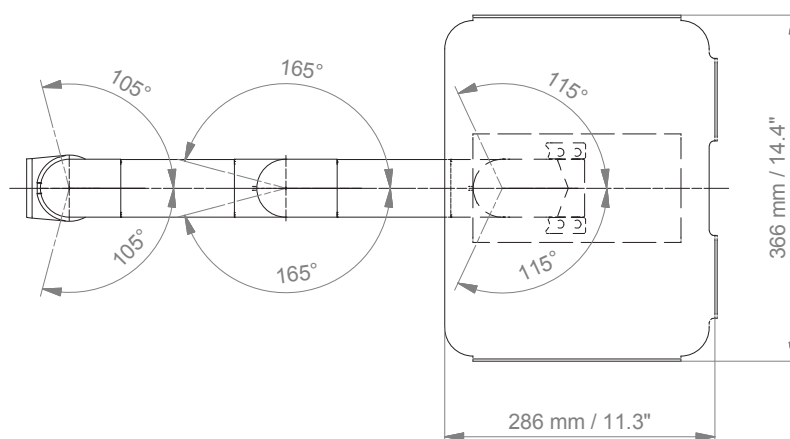
Extended pivot arm light duty

Technical data

SIDE VIEW



TOP VIEW



Height adjustable arm



Notebook tray	360 x 280 mm / 14.2 x 11"
Height adjustment	slow-flowing spring, parallel linkage for a constant viewing angle
Colours to choose	decorative parts RAL 5013 cobalt blue / RAL 7024 graphite grey aluminum parts RAL 9016 traffic white / RAL 9002 grey white
Max. load capacity support arm	21 kg / 46.3 lbs
Max. load notebook tray	10 kg / 22 lbs
Product weight	4.6 kg / 10.1 lbs
Balancing range	600 N (1 - 4 kg / 2.2 - 8.8 lbs)
Part number	A-431TN-Y.CD_60

Fixings

Y | details page 21 and 22



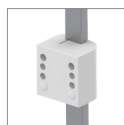
4S

Adapter for
vertical wall channel



2F

Horizontal rail clamp



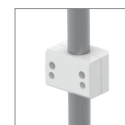
3

Vertical rail clamp



1V

Universal pole clamp



1
1B
1F
1C

Fixed pole clamp



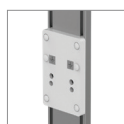
13

Adapter for Mindray
medical supply units



17

Adapter for Amico
pendants & headwalls



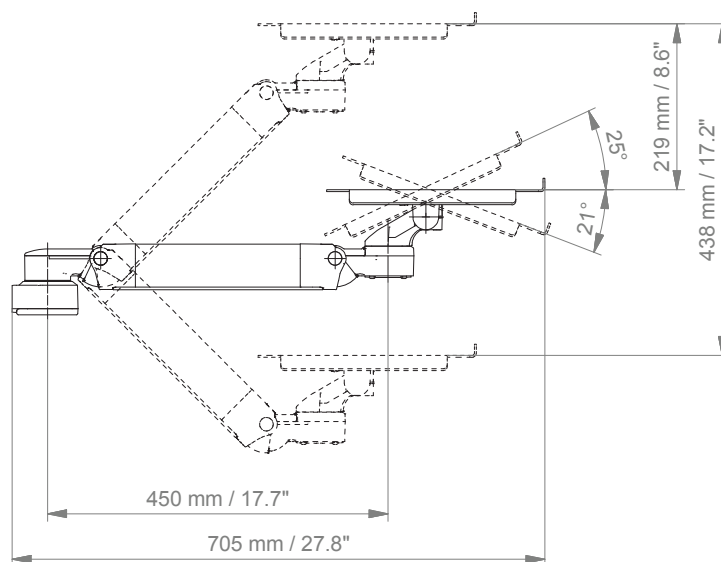
9

Adapter for Löwenstein Medical
anaesthesia machines

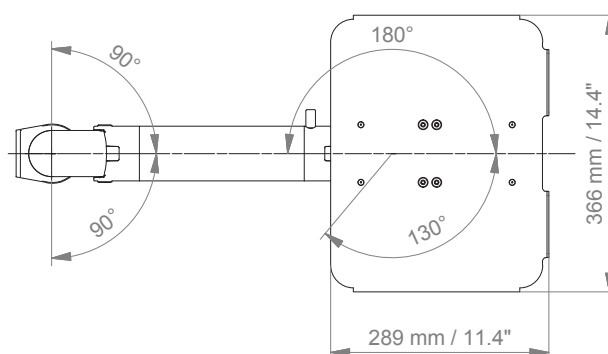
Height adjustable arm

Technical data

SIDE VIEW



TOP VIEW



Extended height adjustable arm



Notebook tray	360 x 280 mm / 14.2 x 11"
Height adjustment	slow-flowing spring, parallel linkage for a constant viewing angle
Colours to choose	decorative parts RAL 5013 cobalt blue / RAL 7024 graphite grey aluminum parts RAL 9016 traffic white / RAL 9002 grey white
Max. load capacity support arm	21 kg / 46.3 lbs
Max. load notebook tray	10 kg / 22 lbs
Product weight	5.6 kg / 12.3 lbs
Balancing range	600 N (1 - 4 kg / 2.2 - 8.8 lbs)
Part number	A-73130TN-Y.CD_60

Fixings

Y | details page 21 and 22



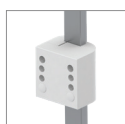
4S

Adapter for vertical wall channel



2F

Horizontal rail clamp



3

Vertical rail clamp



1V

Universal pole clamp



1
1B
1F
1C

Fixed pole clamp



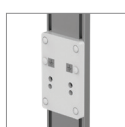
13

Adapter for Mindray medical supply units



17

Adapter for Amico pendants & headwalls



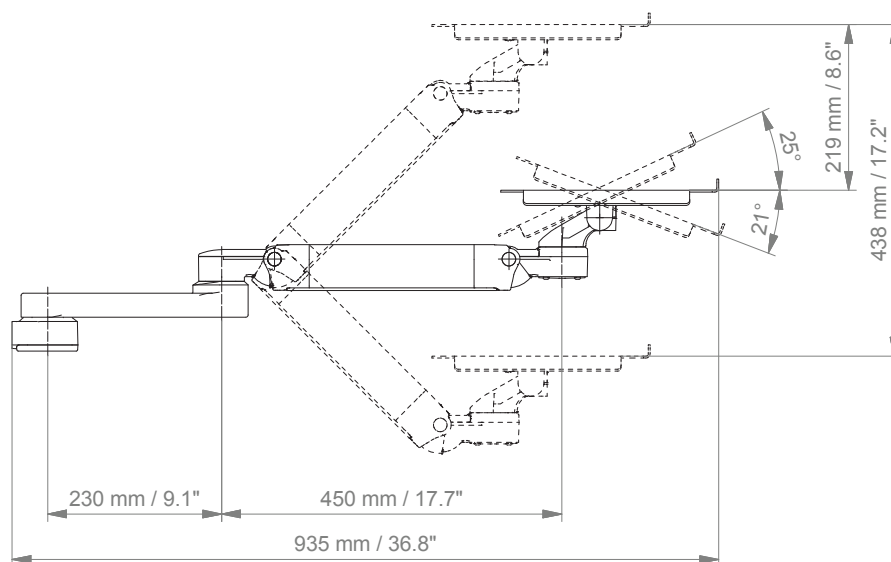
9

Adapter for Löwenstein Medical anaesthesia machines

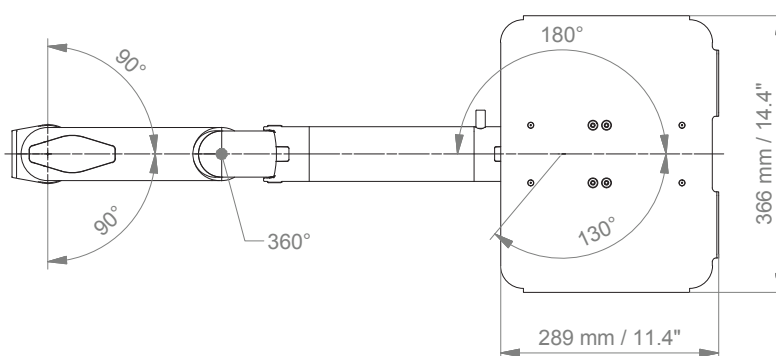
Extended height adjustable arm

Technical data

SIDE VIEW

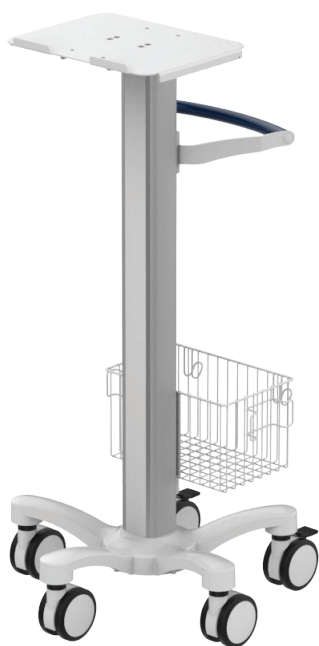


TOP VIEW



Cart light duty

Example configuration



Notebook tray

360 x 280 mm / 14.2 x 11", with tilt function

Accessories

5-star base aluminum base without counter weight
double wheel castors, ø 100 mm / 3.9", 2 lockable
column to accept components and accessories on opposite sides

Colours to choose

decorative parts	RAL 5013 cobalt blue / RAL 7024 graphite grey
base	RAL 9016 traffic white
handle	RAL 9016 traffic white / RAL 5013 cobalt blue / RAL 7024 graphite grey

Max. load capacity

7 kg / 15.4 lbs (without counter weight)

Optional accessories

basket big 300 x 200 x 180 mm / 11.8 x 7.9 x 7.1"
basket small 200 x 150 x 100 mm / 7.9 x 5.9 x 3.9"
handle

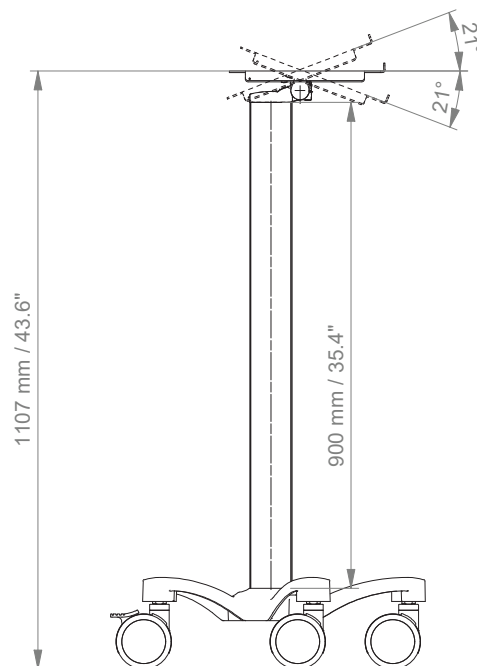
Part number

cart	R-002TN. CD
basket big	Z-51-4Z.1
basket small	Z-52-4Z.1
handle	Z-HD-4. C1

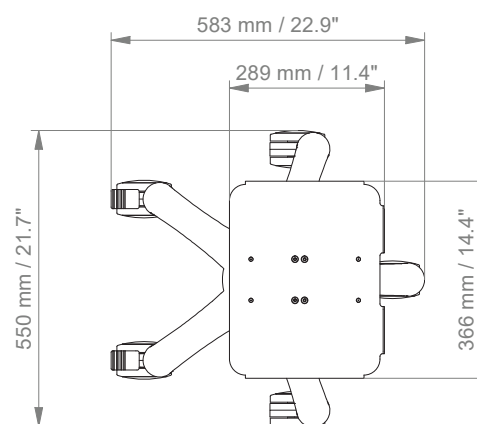
Cart light duty

Technical data

SIDE VIEW



TOP VIEW



Cart light duty RC

Example configuration



Notebook tray

360 x 280 mm / 14.2 x 11", with tilt function and retractable mouse tray

Accessories

5-star base aluminum base without counter weight
double wheel castors, ø 100 mm / 3.9", 2 lockable
column to accept components and accessories on opposite sides

Colours to choose

decorative parts	RAL 5013 cobalt blue / RAL 7024 graphite grey
base	RAL 9016 traffic white
handle	RAL 9016 traffic white / RAL 5013 cobalt blue / RAL 7024 graphite grey

Max. load capacity

7 kg / 15.4 lbs (without counter weight)

Optional accessories

basket big 300 x 200 x 180 mm / 11.8 x 7.9 x 7.1"
basket small 200 x 150 x 100 mm / 7.9 x 5.9 x 3.9"
handle

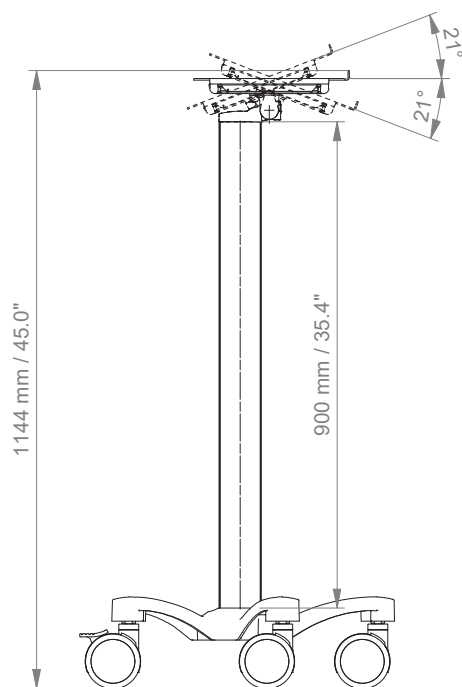
Part number

cart	R-002TN.C1_RC
basket big	Z-51-4Z.1
basket small	Z-52-4Z.1
handle	Z-HD-4.C1

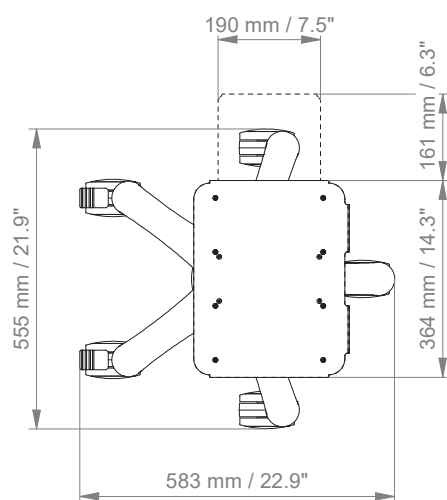
Cart light duty RC

Technical data

SIDE VIEW



TOP VIEW



Cart light duty kit I

Kit configuration



Notebook tray

360 x 280 mm / 14.2 x 11", with tilt function

Cart light duty

5-star base aluminum base with counter weight
double wheel castors, ø 100 mm / 3.9", 2 lockable
column to accept components and accessories on opposite sides

Colours

decorative parts RAL 5013 cobalt blue
base RAL 9016 traffic white
handle RAL 9016 traffic white

Max. load capacity

3 kg / 6.6 lbs notebook tray
1 kg / 2.2 lbs keyboard tray
10 kg / 22 lbs basket

Kit number

R-002TN.b11_285960

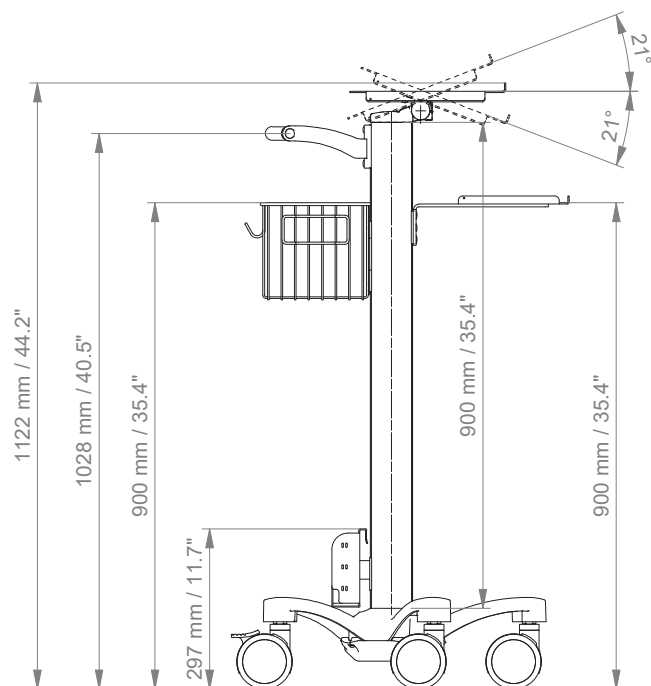
Consisting of the following parts:

R-002TN.b11	cart light duty
Z-51-4Z.1	basket big 300 x 200 x 180 mm / 11.8 x 7.9 x 7.1"
Z-HD-4.w1	handle for carts
Z-E-4Z.1_58	keyboard tray 580 x 200 mm / 22.8 x 7.9"
Z-NH-4Z.1	power supply holster

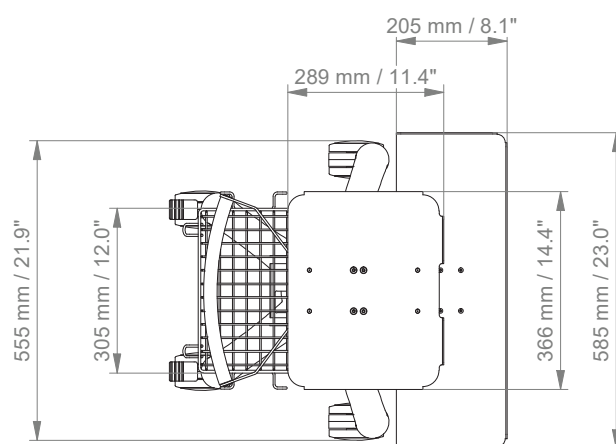
Cart light duty kit I

Technical data

SIDE VIEW










TOP VIEW




Fixings



Illustration	Description	Notes	Weight	Part no.
	Adapter for vertical wall channel	To mount to CIM wall channel (compatible with GCX channel) Please order separately: CIM wall channel, see catalogue accessoires	0.6 kg / 1.3 lbs	4S
	Horizontal rail clamp	To mount to horizontal European rails 10 x 25, 8 x 35, 10 x 30, 10 x 50 mm	1.1 kg / 2.4 lbs	2F
	Vertical rail clamp	To mount to vertical European rail 10 x 25 mm	0.5 kg / 1.1 lbs	3
	Universal pole clamp	V-block to mount to pole \varnothing 23 - 40 mm / 0.9 - 1.6"	0.6 kg / 1.3 lbs	1V
	Fixed pole clamp	To mount to pole \varnothing 25 mm / 1.0" To mount to pole \varnothing 30 mm / 1.2" To mount to pole \varnothing 35 mm / 1.4" To mount to pole \varnothing 38 mm / 1.5"	0.3 kg / 0.7 lbs 0.4 kg / 0.9 lbs 0.4 kg / 0.9 lbs 0.4 kg / 0.9 lbs	1 1B 1F 1C
	Adapter medical supply units	For Mindray medical supply units	0.8 kg / 1.8 lbs	13
	Adapter pendants & headwalls	For Amico pendants & headwalls	0.6 kg / 1.3 lbs	17

Fixings for anaesthesia machines



Illustration	Description	Notes	Weight	Part no.
	Adapter for Löwenstein Medical anaesthesia machines	Adapter for Leon / Leon plus	0.4 kg / 0.9 lbs	9
If your anaesthesia machine does not have a side channel already mounted to the machine, please order the following in addition to 4S:				
	Adapter for Dräger	Dräger Primus / Julian / Cato / Fabius GS / Zeus	0.5 kg / 1.1 lbs 1.0 kg / 2.2 lbs	DR-J01 DR-J02
		side channel adapter L 127 mm / 5" side channel adapter L 320 mm / 12.6"		
	Adapter for GE	GE Avance / Aespire / Aestiva	0.5 kg / 1.1 lbs	DX-AES-01
		side channel adapter L 200 mm / 7.9"		



CIM med GmbH

Euro-Industriepark
Margot-Kalinke-Str. 9
80939 Munich / Germany

T +49 89. 978 94 08-0
F +49 89. 978 94 08-29
M info@cim-med.com

www.cim-med.com

