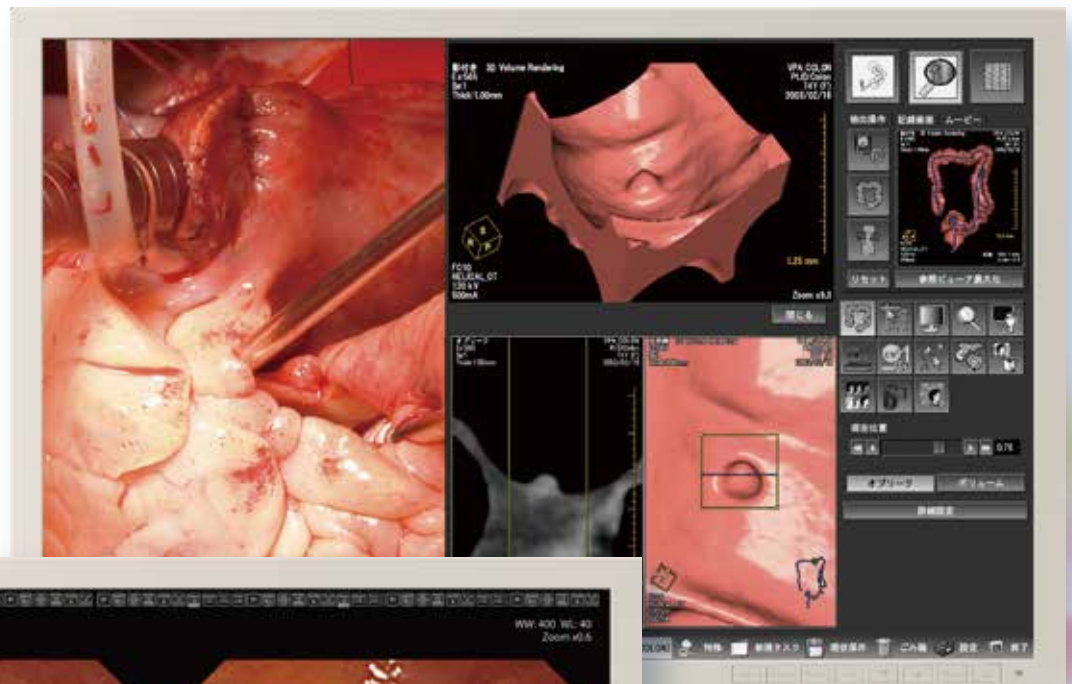
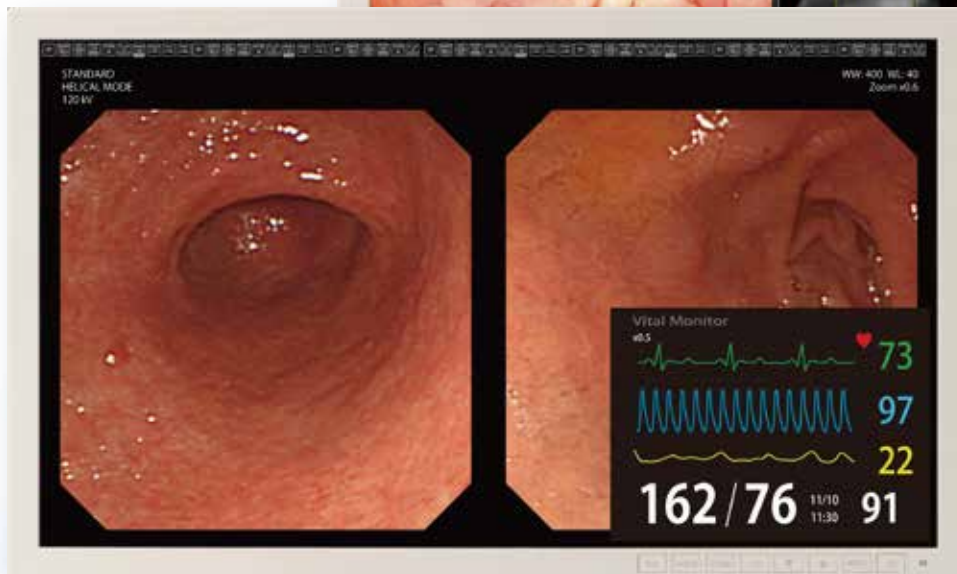


21.5" Color Display  
**CCL220**

24.1" Color Display  
**CCL244**



CCL244



CCL220

*Advanced surgical display for the operating room providing the most accurate images with full HD capability and LED backlight*

CCL220	21.5"	250 cd/m <sup>2</sup>	1000:1	LED Backlight	Multi Input	Analog Output	Internal Power Supply	Picture in Picture	Picture by Picture	Special AR Coating
CCL244	24.1"	300 cd/m <sup>2</sup>	1000:1	LED Backlight	Multi Input	Analog Output	Internal Power Supply	Picture in Picture	Picture by Picture	Special AR Coating

# 21.5" Color Display CCL220

# 24.1" Color Display CCL244

## Features :

### ▶ IPS Panel Technology

IPS panel technology provides high brightness, a wide viewing angle and accuracy in color.

### ▶ AR Coating

AR coating technology addresses properties of focus, noise reduction, high contrast and less reflection to produce crisper images.

### ▶ Multi-Interface

CCL220 and CCL244 support multiple interfaces including DVI, HDMI, Analog RGB, S-Video, HD-SDI and NTSC/PAL. (DVI and HDMI for input only)

### ▶ Multi-Resolution

From VGA 640 x 480 to HDTV 1920 x 1080 (1920 x 1200 with CCL244), a wide variety of signals are supported.

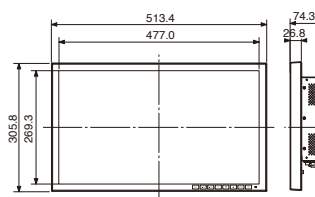
### ▶ Picture-in-Picture (PIP), Picture-by-Picture (PbyP)

These features allow two videos/images from multiple signal inputs to be displayed simultaneously so that surgeons can effectively obtain required information.

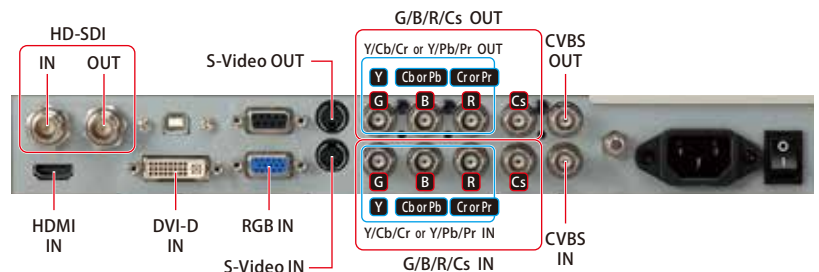
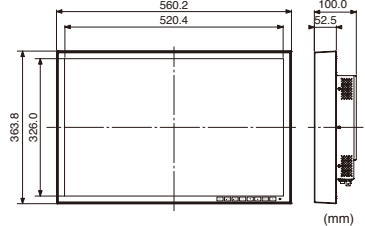
## Specifications

Model Name		CCL220	CCL244
LCD Panel	Technology	21.5-inch, TFT color active matrix IPS technology	24.1-inch, TFT color active matrix IPS technology
	Display Area	475.2 mm x 267.3 mm	518.4 mm x 324 mm
	Contrast Ratio	1000:1 (typ)	
	Maximum Luminance	250cd/m <sup>2</sup> (typ)	300cd/m <sup>2</sup> (typ)
Visual Performance	Viewing Angle	178° vertical and horizontal (Wide view)	
	Native Resolution	1920 x 1080	1920 x 1200
	Grayscale	256 shades of grayscale are simultaneously displayed from a palette of 1021 grayscale steps	
	Display Colors	16.77 million colors from a palette of 1.06 billion colors	
Interface	Input Signal	DVI, HDMI, D-sub 15 pin---RGB, S-Video, BNC(HD-SDI), BNC(Y • Cb • Cr), BNC(Y • Pb • Pr) BNC(CVBS)---NTSC/PAL, BNC(G • B • R • Cs)---RGBS	
	Output Signal	S-Video, BNC(HD-SDI), BNC(Y • Cb • Cr), BNC(Y • Pb • Pr) BNC(CVBS)---NTSC/PAL, BNC(G • B • R • Cs)---RGBS	
Input Power Supply	Input	100V~240V	
	Maximum Power Consumption	60W (typ)	
Features		Picture-in-Picture (PIP), Picture-by-Picture (PbyP)	
Approvals		ANSI/AAMI ES60601-1(2005) + A1 (2012), CAN/CSA-C22.2 No. 60601-1(2008), CE (EN60601-1, EN60601-1-2), FCC Part15 subpart B Class B, ICES-003-B, VCCI Class B, CCC, FDA 510(k), RoHS, J-Moss	
Physical Characteristics	Dimensions	513.4(W) x 305.8(H) x 74.3(D)mm	560.2(W) x 363.8(H) x 100(D)mm
	Weight	approx. 5.1 kg	approx. 7.1 kg
	Mount	VESA mounting 100mm x 100mm	
Accessories		Power cord, DVI cable, Users manual	

CCL220



CCL244



●“TOTOKU” is a brand of medical and industrial displays manufactured and sold by JVCKENWOOD Corporation. ●Company names and product names are the registered trademarks of the respective companies. ●Product specifications and appearance are subject to change without notice. ●Colors in photographs may differ from actual colors due to the printing process. ●Images on screens are simulated.



### Safety Precautions

- Please read the user's manual for safe and proper use.
- Do not expose the product to dust, moisture, steam, or oily smoke. It could cause fire, electric shock, or a failure.

Please contact our distributor below with inquiries and orders.

Healthcare Business Operation  
JVCKENWOOD Corporation  
3-12, Moriya-cho, Kanagawa-ku, Yokohama-shi, Kanagawa, 221-0022, JAPAN  
TEL: +81-45-450-1908 FAX: +81-45-450-1926  
E mail : medical-display.j@jvckenwood.com